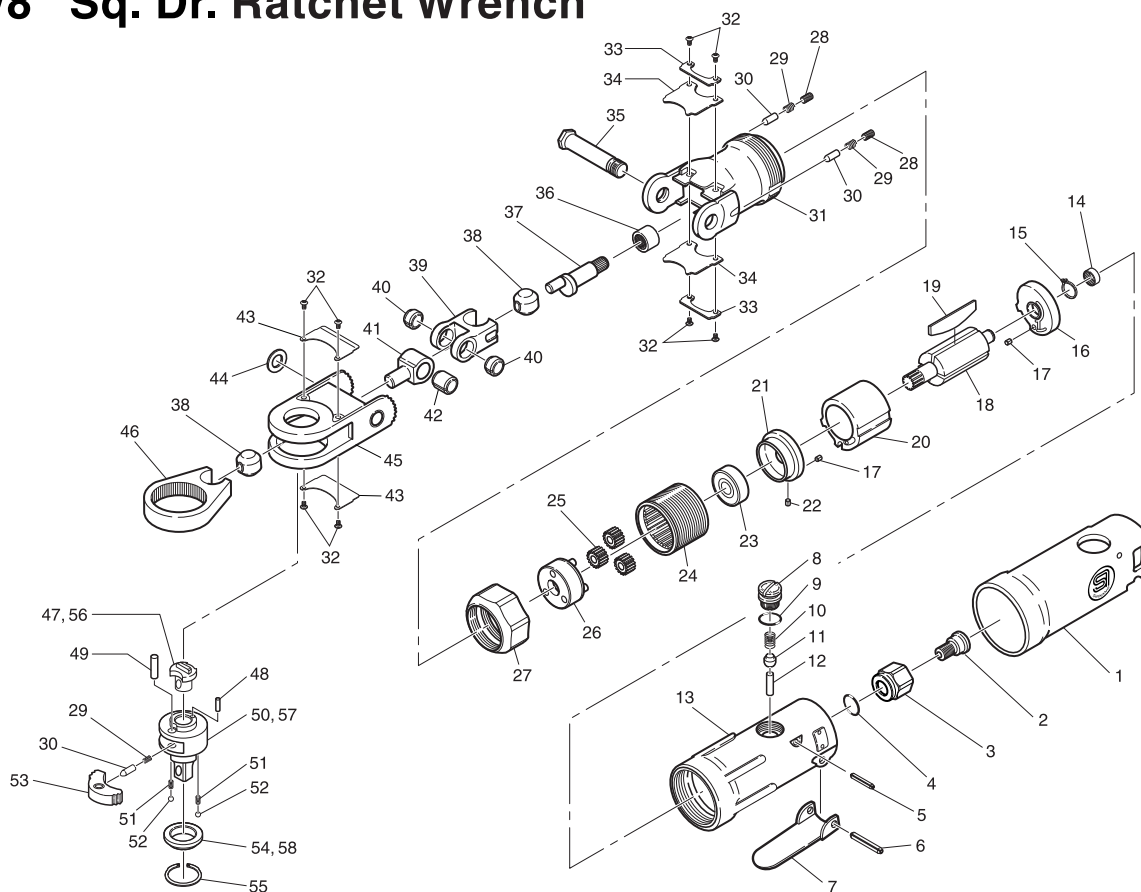


SI-1240

1/4" Sq. Dr. Ratchet Wrench

SI-1241

3/8" Sq. Dr. Ratchet Wrench



Ref. No.	Parts No.	Description	Q'ty	Ref. No.	Parts No.	Description	Q'ty
1	310J-2	Housing Cover	1	30	310-16	Reverse Pin	3
2	310G-4	Retaining Screw	1	31	321-1	Pivot Housing	1
3	310G-3	Inlet Bushing	1	32	322-16	Screw	8
4	P-8	O-Ring	1	33	321-11	Pivot Cover Retainer	2
5	25-20	Roll Pin (2.5 φ -20mm)	1	34	321-3	Pivot Cover	2
6	30-24	Roll Pin (3 φ -24mm)	1	35	321-4	Pivot Shaft	1
7	315-8	Throttle Lever	1	36	HK0910	Needle Bearing	1
8	315-9A	Air Regulator	1	37	310C-1	Crank Shaft	1
9	S-9	O-Ring	1	38	310-8	Drive Bushing	2
10	670-49	Valve Spring	1	39	321-5	1st Driver	1
11	300-10	Valve	1	40	321-7	1st Driver Bush	2
12	310-4S	Valve Pin	1	41	321-6	2nd Driver	1
13	310J-1	Motor Housing incl. Bush (310-1S)	1	42	321-8	2nd Driver Bush	1
14	KE-45	Needle Bearing	1	43	321-10	Ratchet Housing Cover	2
15	JS-6.35	Retaining Ring	1	44	DB-6H	Cup Spring	1
16	310-4	Rear Plate	1	45	321-2	Ratchet Housing	1
17	25-4	Roll Pin (2.5 φ -4mm)	2	46	310-3	Yoke	1
18	310-11	Rotor	1	47	310-17	Reverse Lever for 1/4"	1
19	330-16	Rotor Blade	4	48	20-5	Roll Pin (2.5 φ -5mm)	1
20	330-17	Cylinder	1	49	310-24	Dowel Pin	1
21	310-5	Front Plate	1	50	310S-6	3/8" Sq. Anvil	1
22	15-6	Roll Pin (1.5 φ -6mm)	1	51	310B-33	Thrust Washer Spring	2
23	608-ZZ	Ball Bearing	1	52	SB-30	Steel Ball	2
24	310-21	Internal Gear	1	53	310-9A	Ratchet Pawl	1
25	310-12	Planet Gear	3	54	310-23	Thrust Washer for 1/4"	1
26	310-2	Planet Cage incl. Planet Pins (310-19×3)	1	55	310-60	Retaining Ring	1
27	321-12	Lock Ring	1	★56	310S-17	Reverse Lever for 3/8"	1
28	ROM40-30	Set Screw	2	★57	310S-6	3/8" Sq. Anvil	1
29	310-34	Reverse Spring	3	★58	310S-23	Thrust Washer for 3/8" Sq. Anvil	1