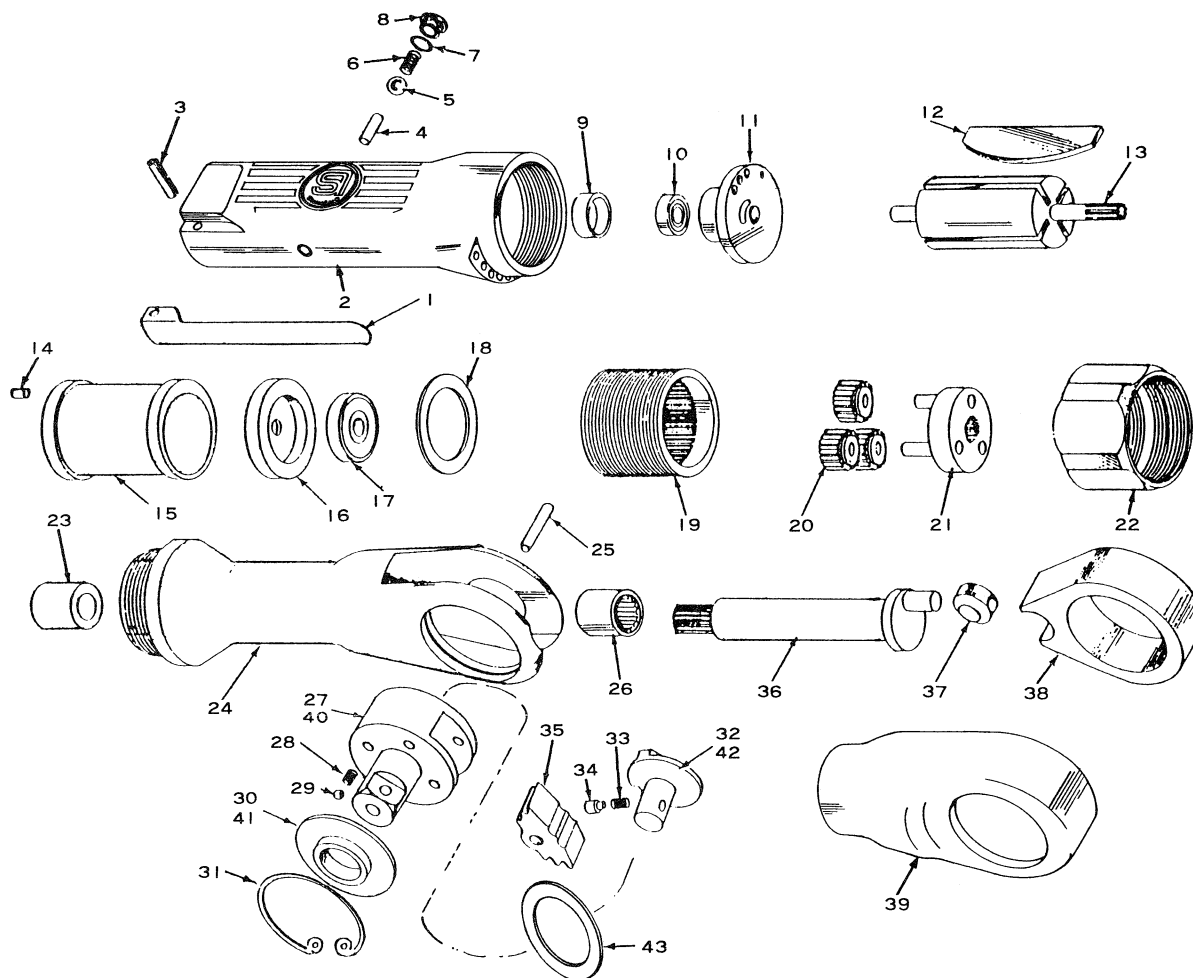


# SI-1320X

## 3/8" Ratchet Wrench

# SI-1325X

## 1/2" Ratchet Wrench



Ref. No.	Parts No.	Description	Q'ty	Ref. No.	Parts No.	Description	Q'ty
1	301-1	Throttle Lever	1	23	300-43	Bush	1
2	300-7SI	Motor Housing incl. Bush (670-10)	1	24	300-11	Ratchet Housing	1
3	30-24	Roll Pin (3-24mm)	1	25	670-27	Dowel Pin	1
4	670-23	Valve Pin	1	26	HK1212	Needle Bearing	1
5	300-10	Valve	1	☆27	300-5	3/8" Sq. Anvil incl. Pin (30-5)	1
6	670-49	Valve Spring	1	28	800B-44	Thrust Washer Spring	2
7	P-9	O-Ring	1	29	SB-5/32	Steel Ball	2
8	800-14	Valve Screw	1	☆30	670-26	Thrust Washer for 3/8" Sq. Anvil	1
9	680-34	Bearing Cap	1	31	IO-30	Retaining Ring	1
10	626	Ball Bearing	1	☆32	300-19	Reverse Lever for 3/8" Sq. Anvil	1
11	300-4	Rear Plate	1	33	670-45	Reverse Spring	1
12	301-15	Rotor Blade	4	34	670-17	Reverse Pin	1
13	300-12	Rotor	1	35	670-9	Ratchet Pawl	1
14	15-6	Roll Pin (1.5-6mm)	1	36	300-20	Crank Shaft	1
15	800-1	Cylinder	1	37	670-8	Drive Bushing	1
16	300-6	Front Plate	1	38	670-3	Yoke	1
17	608	Ball Bearing	1	39	150-55Y	Boot (yellow)	1
18	670-18	Lock Washer	1	★40	671H-2	1/2" Sq. Anvil incl. Pin (30-5)	1
19	300-23	Internal Gear	1	★41	671H-1	Thrust Washer for 1/2" Sq. Anvil	1
20	300-13	Planet Gear	3	★42	671H-3	Reverse Lever for 1/2" Sq. Anvil	1
21	301-2	Planet Cage incl. Planet Pins (300-21x3)	1	43	800-51	Washer	1
22	670-25	Lock Ring	1				