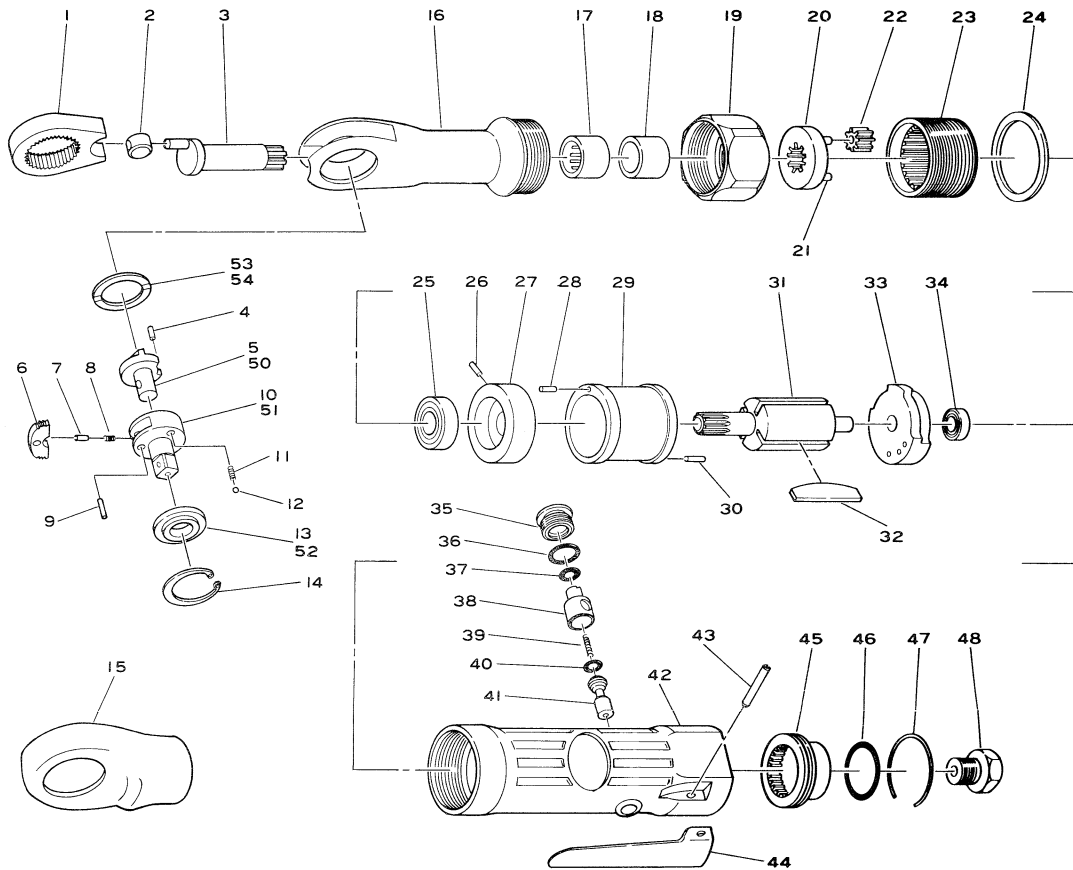


SI-1340

3/8" Sq. Dr. Ratchet Wrench Rear Exhaust

SI-1345

1/2" Sq. Dr. Ratchet Wrench Rear Exhaust



Ref. No.	Parts No.	Description	Q'ty	Ref. No.	Parts No.	Description	Q'ty
1	670-3	Yoke	1	28	15-6	Roll Pin (1.5-6mm)	1
2	670-8	Drive Bushing	1	29	150-3	Cylinder	1
3	300-20	Crank Shaft	1	30	15-16	Roll Pin (1.5-16mm)	1
4	30-5	Roll Pin (3-5mm)	1	31	300-12	Rotor	1
5	300-19	Reverse Lever for 3/8" Sq. Anvil	1	32	670-15	Rotor Blade	4
6	670-9	Ratchet Pawl	1	33	150-2	Rear Plate	1
7	670-17	Reverse Pin	1	34	626	Ball Bearing	1
8	670-45	Reverse Spring	1	35	330-10	Valve Screw	1
9	670-27	Dowel Pin	1	36	P-10	O-Ring	1
10	300-5	3/8" Sq. Anvil inc.: Pin (30-5)	1	37	P-8	O-Ring	1
11	800B-44	Thrust Washer Spring	2	38	330-8	Air Regulator	1
12	SB-5/32	Steel Ball	2	39	350-7	Valve Spring	1
13	670-26	Thrust Washer for 3/8" Sq. Anvil	1	40	P-4	O-Ring	1
14	10-30	Retaining Ring	1	41	330-5	Valve Stem	1
15	150-55R	Boot	1	42	150-1	Motor Housing incl. Bush (330-4)	1
16	300-11	Ratchet Housing	1	43	30-24	Roll Pin (3-24mm)	1
17	HK1212	Needle Bearing	1	44	350-2	Throttle Lever	1
18	300-43	Bush	1	45	620-18	Deflector	1
19	670-25	Lock Ring	1	46	620-28	O-Ring	1
20	301-2	Planet Cage incl. Planet Pins (300-21x3)	1	47	620-30	Retaining Ring	1
21	300-21	Planet Pin	3	48	180-1SC	Inlet Bushing incl. Screen (680-28A)	1
22	300-13	Planet Gear	3	★50	671H-3	Reverse Lever for 1/2" Sq. Anvil	1
23	300-23	Internal Gear	1	★51	671H-2	1/2" Sq. Anvil incl. Pin (30-5)	1
24	670-18	Lock Washer	1	★52	671H-1	Thrust Washer for 1/2" Sq. Anvil	1
25	608	Ball Bearing	1	53	800-51	Wear Washer 0.5mm (Optional)	
26	25-4	Roll Pin (2.5-4mm)	1	54	800-2	Wear Washer 0.8mm (Optional)	
27	150-7	Front Plate	1				

No.53,54:For Repair Only
★For SI-1345

Printed in Japan
★★★★★Jul. 1998