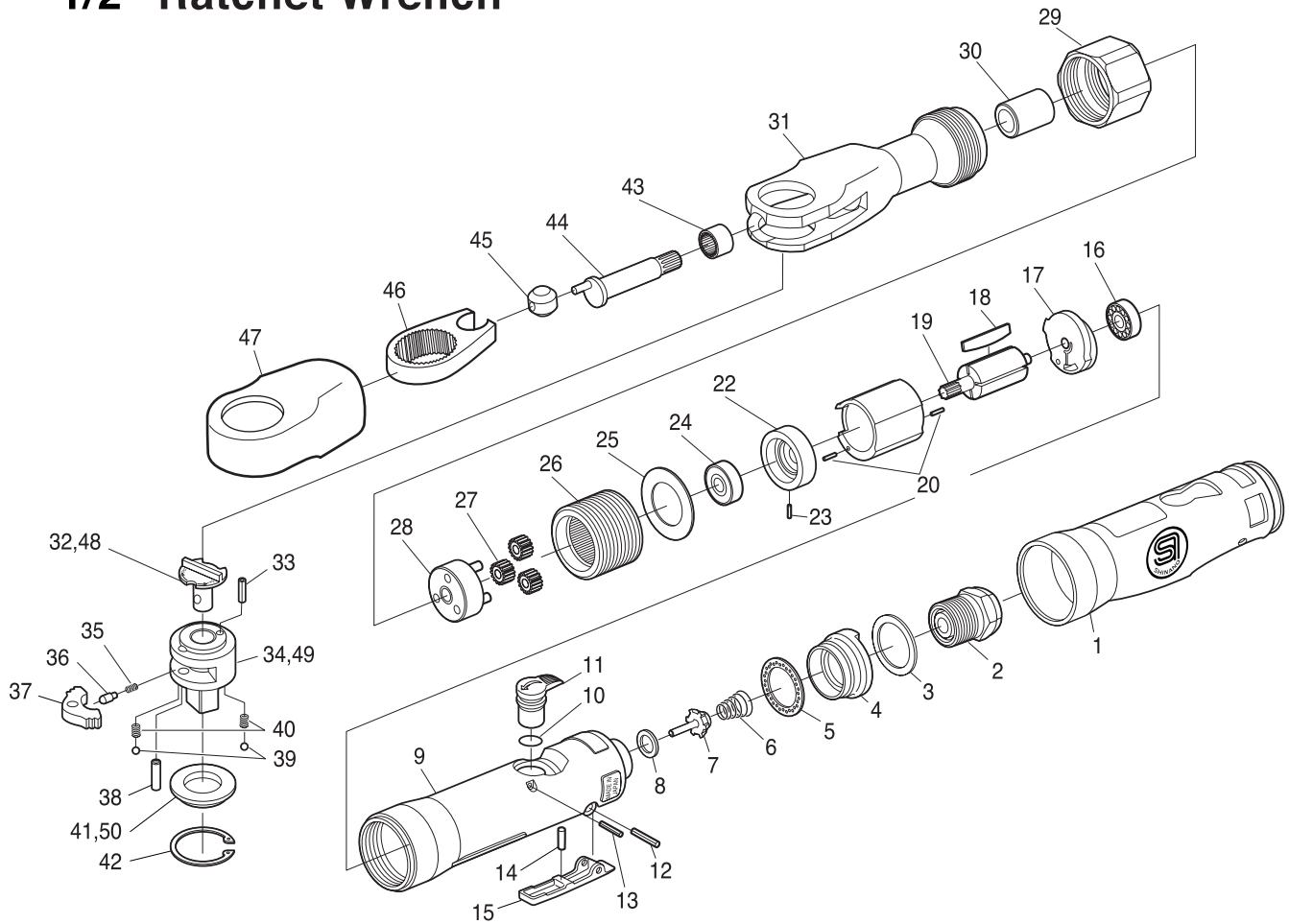


SI-1340B 3/8" Ratchet Wrench

SI-1345B 1/2" Ratchet Wrench



Ref. No.	Parts No.	Description	Q'ty	Ref. No.	Parts No.	Description	Q'ty
1	305-8	Housing Cover	1	26	300-23	Internal Gear	1
2	305-4	Swivel Bushing	1	27	300-13	Planet Gear	3
3	305-7	Washer	1	28	301-2	Planet Cage incl. Planet Pins(300-21x3)	1
4	305-5	Deflector	1	29	670-25	Lock Ring	1
5	305-6	Silencer	1	30	300-43	Bush	1
6	325-16	Valve Spring	1	31	305-3	Ratchet Housing	1
7	325-8	Valve	1	32	300-19	Reverse Lever for 3/8" Sq.Anvil	1
8	139-9	Valve Seat	1	33	30-5	Roll Pin (3φ-5mm)	1
9	305-2	Motor Housing	1	34	300-5	3/8" Sq. Anvil incl. Pin(30-5)	1
10	P-7	O-Ring	1	35	670-45	Reverse Spring	1
11	325-6	Air Regulator	1	36	670-17	Reverse Pin	1
12	30-20	Roll Pin (3φ-20mm)	1	37	670-9	Ratchet Pawl	1
13	25-20	Roll Pin (2.5φ-20mm)	1	38	670-27	Dowel Pin	1
14	310-4S	Valve Pin	1	39	SB-5/32	Steel Ball	2
15	325-7	Throttle Lever	1	40	800B-44	Thrust Washer Spring	2
16	626	Ball Bearing	1	41	670-26	Thrust Washer for 3/8" Sq.Anvil	1
17	303-6	Rear Plate	1	42	IO-30	Retaining Ring	1
18	301-15	Rotor Blade	4	43	HK1212	Needle Bearing	1
19	300-12	Rotor	1	44	302W-3	Crank Shaft	1
20	15-6	Roll Pin (1.5φ-6mm)	2	45	670-8	Drive Bushing	1
21	303-11	Cylinder	1	46	670-3	Yoke	1
22	303-5	Front Plate	1	47	150-55	Boot	1
23	25-4	Roll Pin (2.5φ-4mm)	1	★48	671H-3	Reverse Lever for 1/2" Sq. Anvil	1
24	608ZZ	Ball Bearing	1	★49	671H-2	1/2" Sq. Anvil incl. Pin(30-5)	1
25	670-18	Lock Washer	1	★50	671H-1	Thrust Washer for 1/2" Sq. Anvil	1