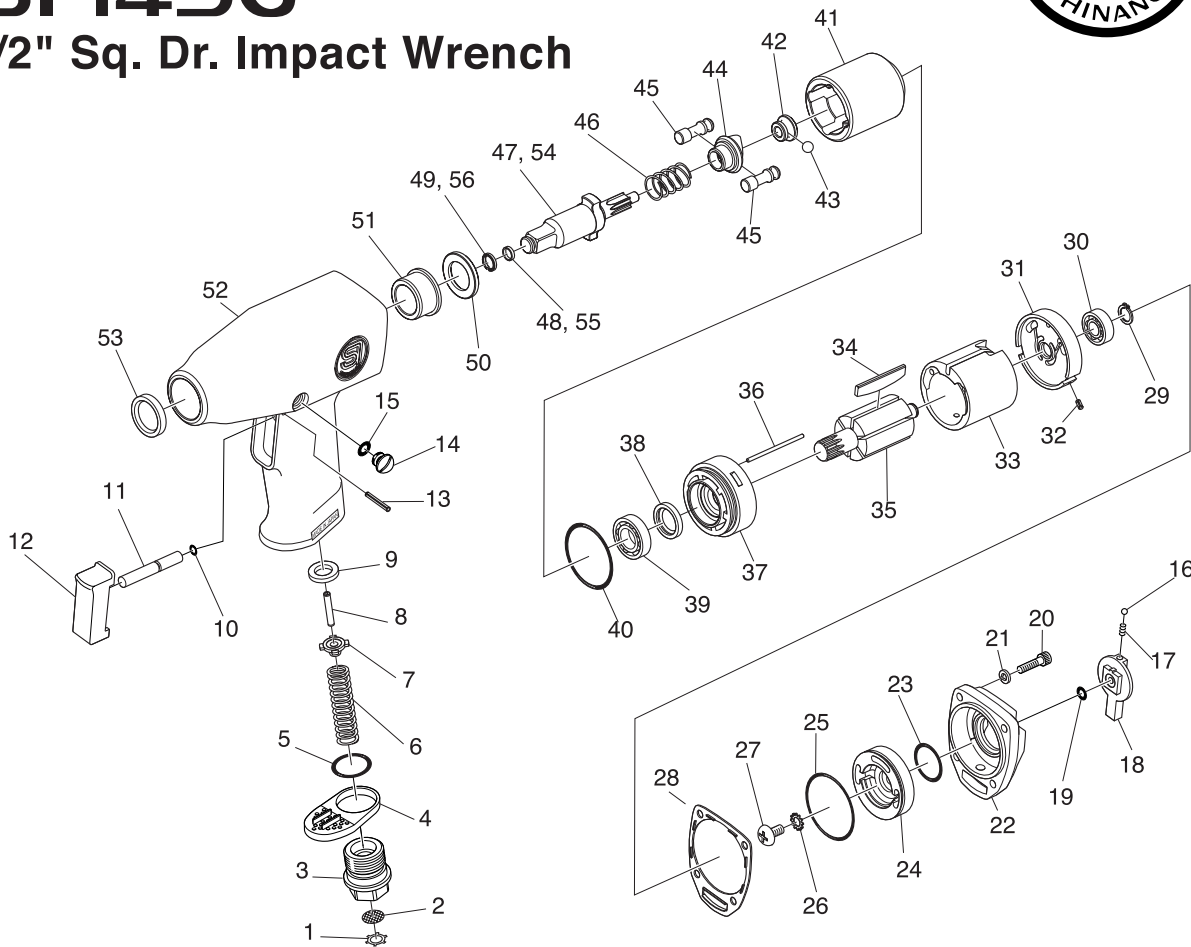


SI-1356

3/8" Sq. Dr. Impact Wrench

SI-1456

1/2" Sq. Dr. Impact Wrench



Ref. No.	Parts No.	Description	Q'ty	Ref. No.	Parts No.	Description	Q'ty
1	CRTW-12	Retainer	1	29	JS-8	Retaining Ring	1
2	680-28A	Screen	1	30	698	Ball Bearing	1
3	991-5	Inlet Bushing	1	31	456GPH-9	Rear Plate	1
4	216-5	Deflector	1	32	25-5	Roll Pin(2.5 φ -5mm)	1
5	991-7	O-Ring	1	33	456GH-2	Cylinder	1
6	736-15	Valve Spring	1	34	456GH-4	Rotor Blade	6
7	960-35	Valve	1	35	456GPH-7	Rotor	1
8	30-32	Roll Pin(3 φ -32mm)	1	36	456GP-13	Dowel pin	1
9	960-34	Valve Seat	1	37	456GPH-8	Front plate	1
10	216-6	O-Ring	1	38	910-17	Oil seal	1
11	456GP-14	Valve Shaft	1	39	6901	Ball Bearing	1
12	456GP-15	Trigger	1	40	S-35	O-Ring	1
13	25-18	Roll Pin(25 φ -18mm)	1	41	456GPH-6	Hammer Cage	1
14	450-29	Plug	1	42	456H-6	Pilot	1
15	P-5	O-Ring	1	43	SB-60	Steel Ball	1
16	SB-1/8	Steel Ball	1	44	456H-5	Cam	1
17	960-50	Spring	1	45	456H-4	Hammer Pin	2
18	456GP-6	Reverse Lever	1	46	456H-7	Cam Spring	1
19	S-5	O-Ring	1	47	456GP-9	3/8" Sq. Anvil	1
20	Z-832-160	Cap Screw	4	48	450-11	O-Ring	1
21	HSW-40	Washer	4	49	450-10	Socket Retainer Ring	1
22	456GP-5	Housing Cap	1	50	456GPH-1	Spacer	1
23	456GP-12	O-Ring	1	51	456GPH-3	Anvil Bushing	1
24	456GP-4	Reverse Valve	1	52	456GP-8A	Motor Housing Incl. Insert(456GP-1B×4)	1
25	456GP-11	O-Ring	1	53	910-18	Oil seal	1
26	BT-50	Washer	1	★54	456GPH-2	1/2" Sq. Anvil	1
27	PBM50-100	Screw	1	★55	P-6	O-Ring	1
28	456GP-7	Gasket	1	★56	930-48	Socket Retainer Ring	1