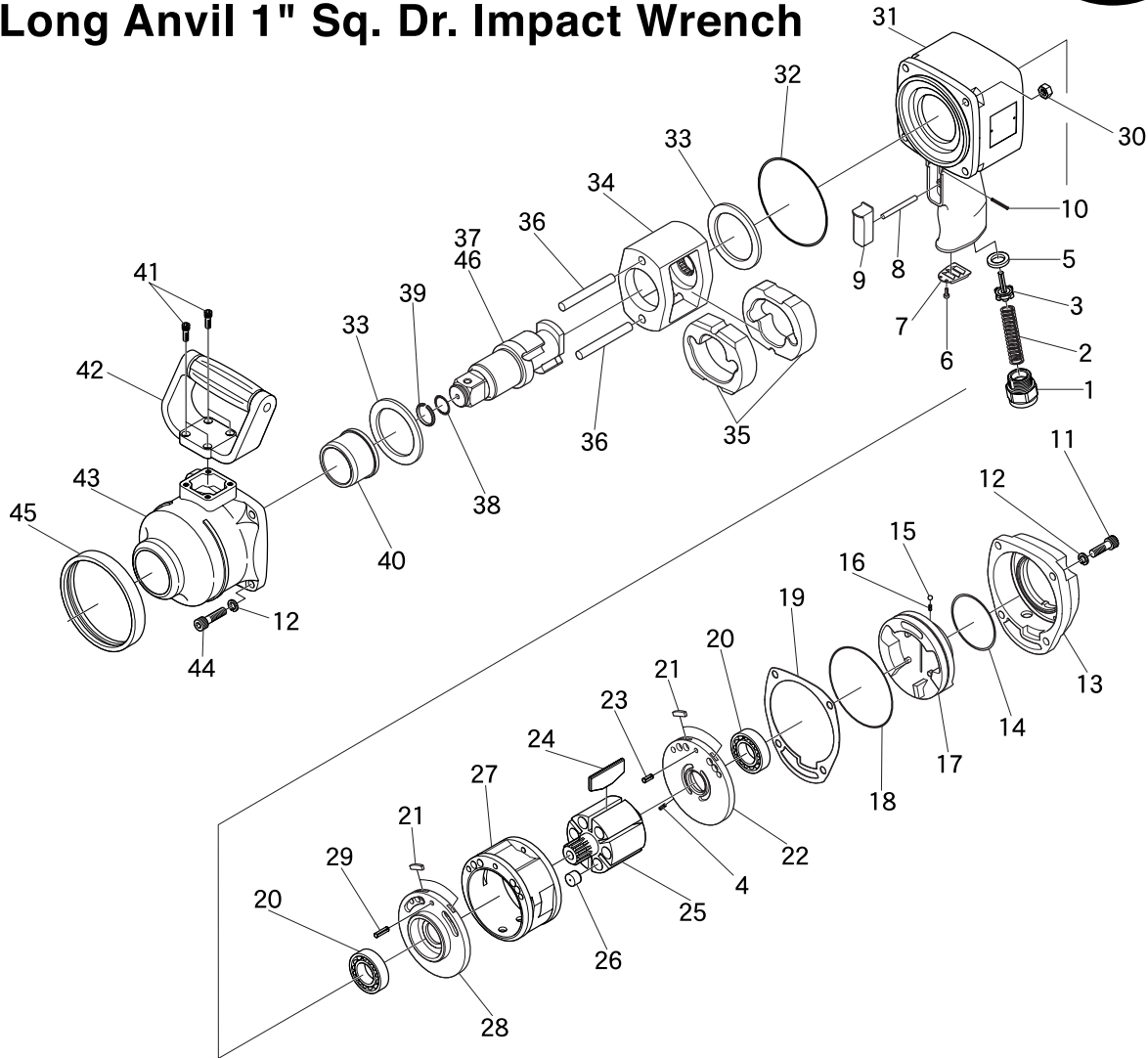


SI-1760T

1" Sq. Dr. Impact Wrench

SI-1766T

Long Anvil 1" Sq. Dr. Impact Wrench



Ref. No.	Parts No.	Description	Q'ty	Ref. No.	Parts No.	Description	Q'ty
1	975-9	Inlet Bushing	1	24	976-12	Rotor Blade	6
2	976P-8	Valve Spring	1	25	976-23	Rotor incl. Plugs (976-23A)	1
3	975-11A	Valve	1	26	976-23A	Plug	6
4	30-8	Roll Pin (3φ-8mm)	1	27	976-13	Cylinder incl. Liner (976-13A)	1
5	975-12	Valve Seat	1	28	976P-10	Front Plate	1
6	JBM30-60	Screw	2	29	50-18	Roll Pin (5φ-18mm)	1
7	976P-7	Deflector	1	30	N1-M80	Nut	4
8	976P-5	Valve Pin	1	31	976P-1	Motor Housing	1
9	976P-4	Trigger	1	32	970-20	O-Ring	1
10	25-24	Roll Pin (2.5φ-24mm)	1	33	976-9	Spacer	2
11	Z-M80-250	Cap Screw	4	34	976-8	Hammer Cage	1
12	HSW-80	Washer	8	35	976-7	Hammer Dog	2
13	976P-2	Housing Cap	1	36	976-10	Hammer Pin	2
14	976P-12	O-Ring	1	37	976-5	Anvil	1
15	SB-3/16	Steel Ball	1	38	P-18	O-Ring	1
16	670-40	Spring	1	39	970-12	Socket Retainer Ring	1
17	976P-6	Reverse Valve	1	40	970-10	Anvil Bush	1
18	976P-11	O-Ring	1	41	Z-1024-150	Cap Screw	4
19	976P-3	Gasket	1	42	976-4	Dead Handle incl. Grip (976-4A)	1
20	6005	Ball Bearing	2	43	976-1	Hammer Case incl. Bush (970-10)	1
21	970-23A	Plug	4	44	Z-M80-300	Cap Screw	4
22	976P-9	Rear Plate	1	45	970-43	Protect Band	1
23	50-12	Roll Pin	1	★46	976-6	Long Anvil	1