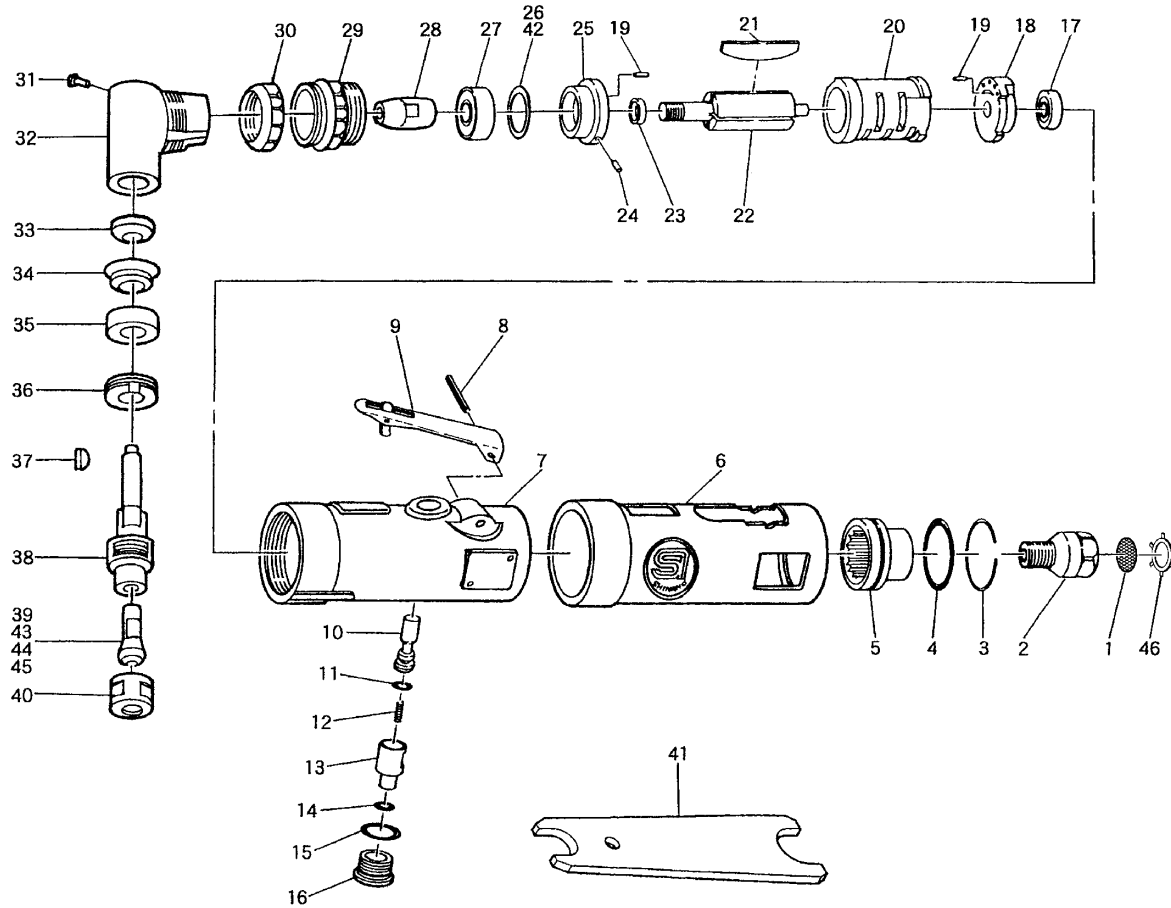


SI-2005

Angle Die Grinder



Ref. No.	Parts No.	Description	Q'ty	Ref. No.	Parts No.	Description	Q'ty
1	680-28A	Screen	1	24	25-3.5	Roll Pin (2.5-3.5mm)	1
2	610-2	Inlet Bushing	1	25	115-19	Front Plate	1
3	610-30	Retaining Ring	1	26	330-20	Shim (0.03mm)	1
4	620-28	O-Ring	1	27	608-ZZ	Ball Bearing	1
5	610-29	Deflector	1	28	115-33B	Pinion Gear	1
6	612-2R	Housing Cover	1	29	115-26	Motor Clamp Nut	1
7	612-1	Motor Housing incl. Bush (330-4)	1	30	115-27	Angle Head Coupling Nut	1
8	30-24	Roll Pin (3-24mm)	1	31	1071C-16	Grease Plug	1
9	350-2L	Throttle Lever	1	32	115-31	Angle Head	1
10	330-5	Valve Stem	1	33	R4-ZZ	Ball Bearing	1
11	P-4	O-Ring	1	34	115-34B	Bevel Gear	1
12	350-7	Valve Spring	1	35	608-LLU	Ball Bearing	1
13	330-8A	Air Regulator	1	36	115-32	Spindle Nut	1
14	P-8	O-Ring	1	37	115-36	Key	1
15	P-10	O-Ring	1	38	115-22	Spindle	1
16	330-10	Valve Screw	1	39	330-24	1/4" Collet	1
17	696-ZZ	Ball Bearing	1	40	330-23	Collet Nut	1
18	610-12	Rear Plate	1	41	330-28	Spanner Wrench (11×17mm)	2
19	25-5	Roll Pin (2.5-5mm)	2	◆42	330-29	Shim (0.05mm)	
20	330-17	Cylinder	1	◆43	330-25	1/8" Collet	
21	330-16	Rotor Blade	4	◆44	330-26	3mm Collet	
22	330-15	Rotor	1	◆45	330-19	6mm Collet	
23	330-18	Collar	1	46	CRTW-12	Retainer	1