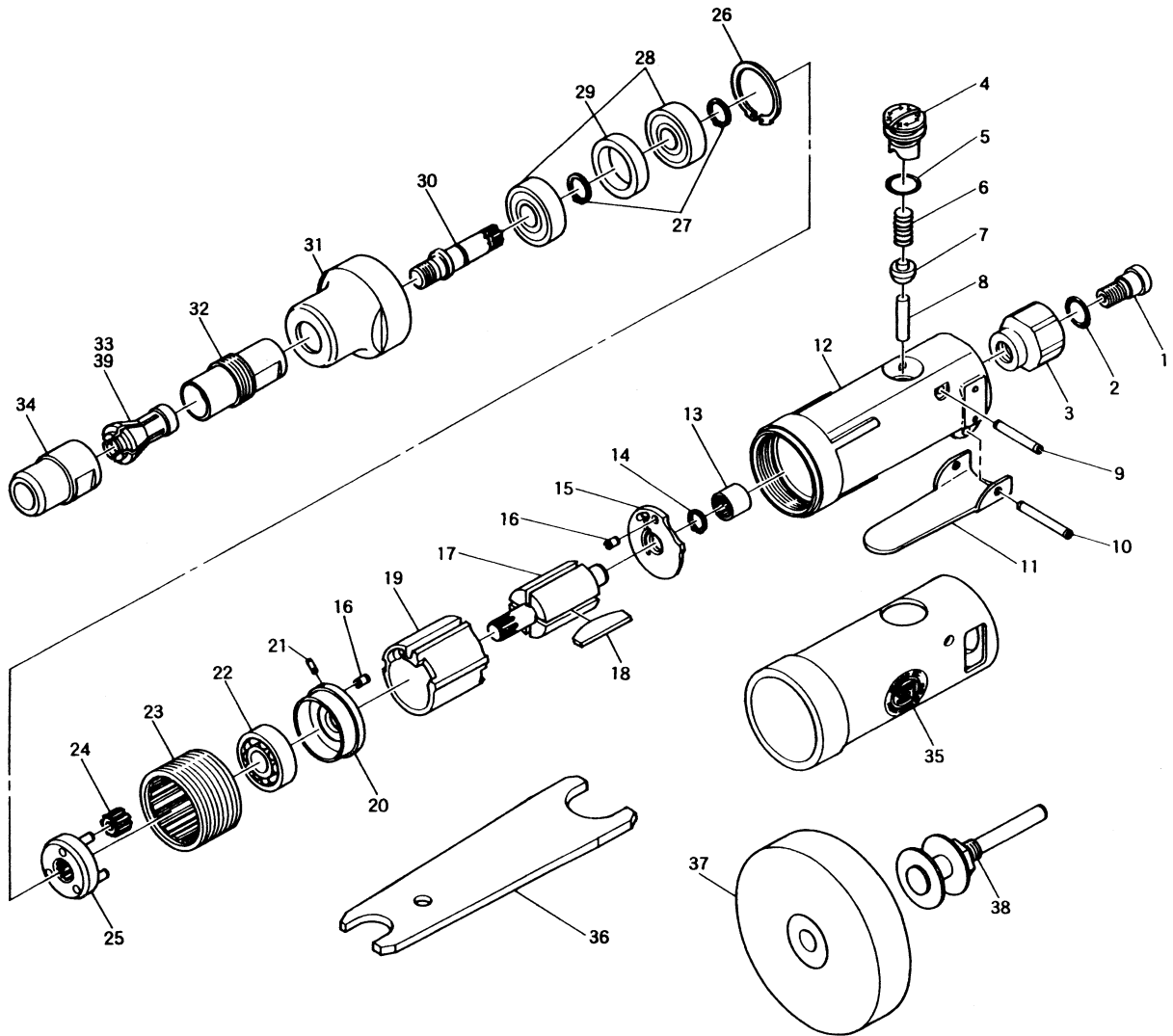


# SI-2016

## Die Grinder



Ref. No.	Parts No.	Description	Q'ty	Ref. No.	Parts No.	Description	Q'ty
1	310G-4	Retaining Screw	1	21	15-6	Roll Pin (1.5-6mm)	1
2	P-8	O-Ring	1	22	608	Ball Bearing	1
3	310G-3	Inlet Bushing	1	23	310-21	Internal Gear	1
4	310KD-5	Air Regulator	1	24	310-12	Planet Gear	3
5	S-9	O-Ring	1	25	310-2	Planet Cage incl. Planet Pins (310-19x3)	1
6	670-49	Valve Spring	1	26	OV-22	Retaining Ring	1
7	300-10	Valve	1	27	JS-8	Retaining Ring	2
8	310-4S	Valve Pin	1	28	608-ZZ	Ball Bearing	2
9	25-20	Roll Pin (2.5-20mm)	1	29	611-3	Spacer	1
10	30-24	Roll Pin (3-24mm)	1	30	611-2	Spindle	1
11	312-12T	Throttle Lever	1	31	611-1	Clamp Nut	1
12	310G-1	Motor Housing incl. Bush (310-1S)	1	32	330-22	Spindle	1
13	KE-45	Needle Bearing	1	33	330-19	6mm Collet	1
14	JS-6.35	Retaining Ring	1	34	330-23	Collet Nut	1
15	310-4	Rear Plate	1	35	611-4	Housing Cover	1
16	25-4	Roll Pin (2.5-4mm)	2	36	330-28	Spanner Wrench (11x17mm)	2
17	310-11	Rotor	1	37	611-5	Eracer	1
18	330-16	Rotor Blade	4	38	611-6	Eracer Fitting Kit	1
19	330-17	Cylinder	1	◆39	330-24	1/4" Collet	
20	310-5	Front Plate	1				

◆Option

Printed In Japan  
Feb. 2000