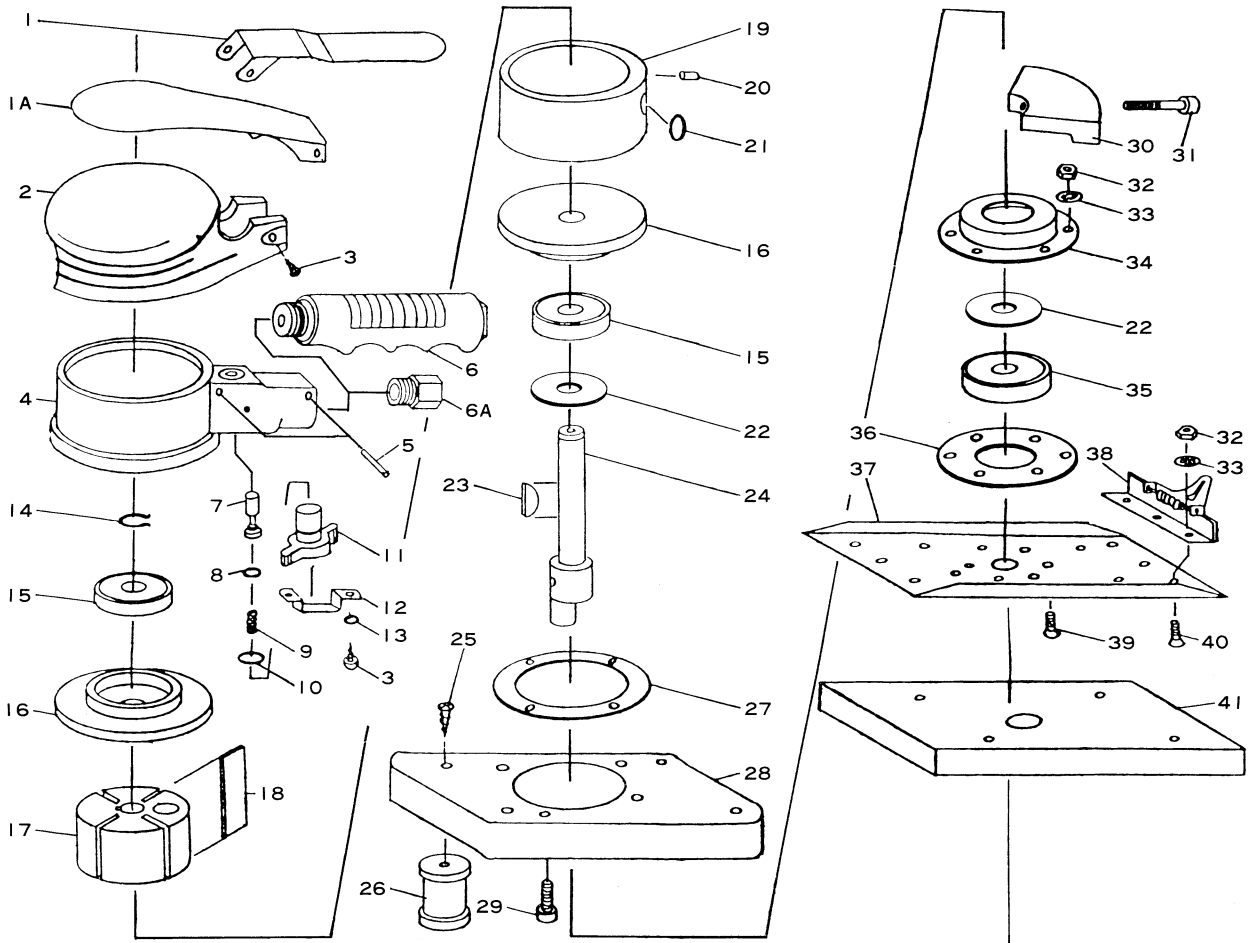


SI-3005 Orbital Sander (with Handle Grip)

SI-3006 Orbital Sander



Ref. No.	Parts No.	Description	Q'ty	Ref. No.	Parts No.	Description	Q'ty
1	#480-13A	Throttle Lever (3005)	1	21	P-7	O-Ring	1
1A	#476-45	Throttle Lever (3006)	1	22	#481-10	Spacer	2
2	#475-26R	Housing Cover	1	23	#480-23	Key	2
3	JIM35-50	Screw	4	24	#475-12	Crank Shaft	1
4	#475-3	Motor Housing incl. Valve Bush	1	25	JIM50-100	Screw	8
5	40-30	Lever Pin (4-30mm)	1	26	#640-48	Rubber Support	4
6	#480-15	Handle Grip incl. Grip Cover	1	27	#470-49	Gasket	1
6A	#680-18	Inlet Bushing	1	28	#477-16A	Basement	1
7	#330-5	Valve Stem	1	29	Z-M50-120	Cap Screw	4
8	P-4	O-Ring	1	30	#475-18	Lower Weight	1
9	#350-7	Valve Spring	1	31	Z-M40-300	Cap Screw	1
10	P-8	O-Ring	1	32	NI-M40	Nut	12
11	#480-4	Air Regulator	1	33	AT-40	Washer	12
12	#480-16	Regulator Retainer	1	34	#475-20	Shoe Bearing Housing	1
13	HSW-35	Washer	2	35	6300LLU	Ball Bearing	1
14	JS-10	Retaining Ring	1	36	#475-24	Spacer	1
15	6200ZZ	Ball Bearing	2	37	#475-21	Shoe	1
16	#640-12A	End Plate	2	38	#475-23	Paper Clip	2
17	#475-6TS	Rotor	1	39	E-M40-100	Screw	6
18	#470-9	Rotor Blade	4	40	E-M40-80	Screw	6
19	#640-1	Cylinder	1	41	#475-22	Pad	1
20	30-6	Roll Pin (3-6mm)	1				