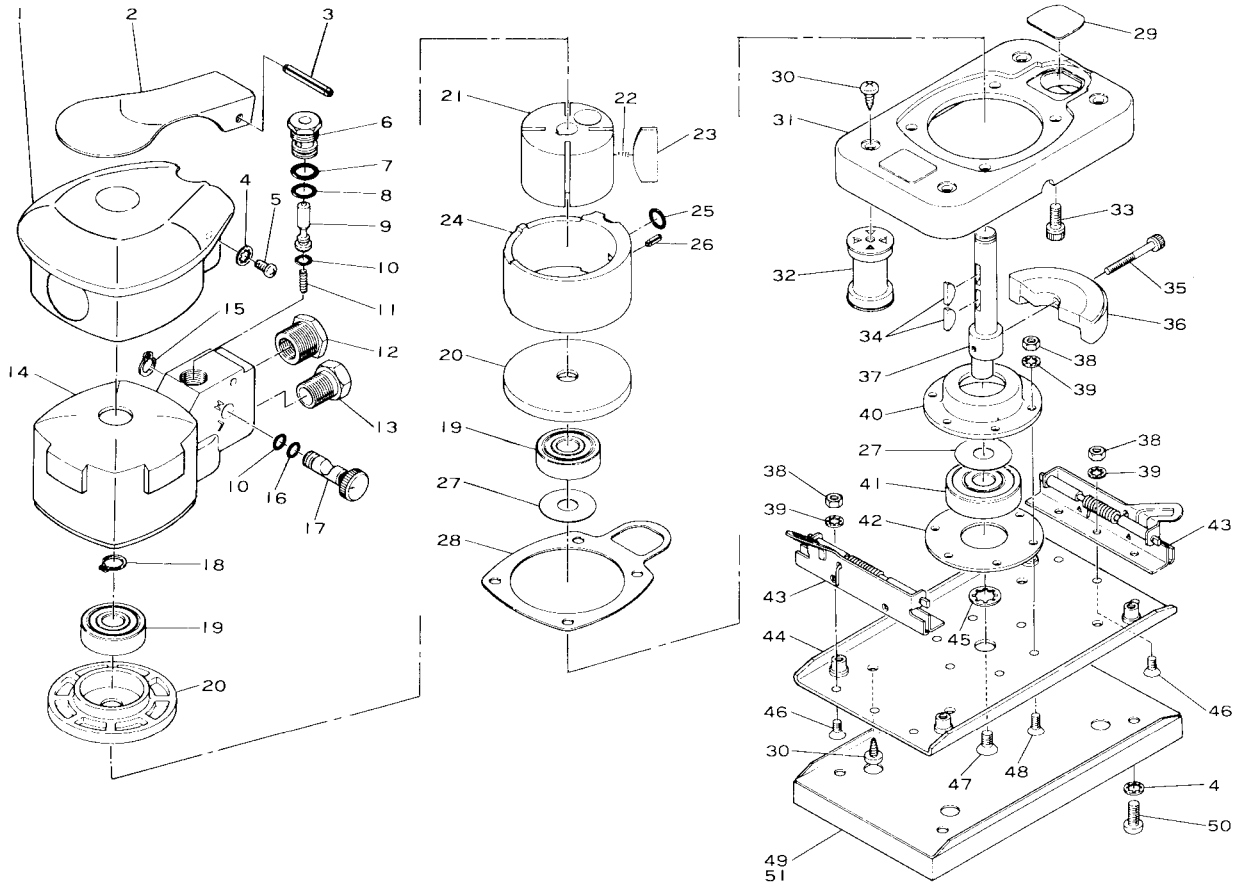


# SI-3007(M)

## Orbital Sander



Ref. No.	Parts No.	Description	Q'ty	Ref. No.	Parts No.	Description	Q'ty
1	570-26	Housing Cover	1	27	481-10	Spacer (Brass)	2
2	476-45	Throttle Lever	1	28	570-38	Gasket	1
3	40-30	Roll Pin (4-30mm)	1	29	570-53	Plug Plate	1
4	AT-50	Washer	6	30	JIM50-100	Screw	8
5	JBM40-100	Screw	2	31	575-15	Basement	1
6	485-5	Valve Body	1	32	640-48	Rubber Support	4
7	S-10	O-Ring	1	33	Z-M50-120	Cap Screw	4
8	P-9	O-Ring	1	34	480-23	Key	2
9	485-1	Valve Stem	1	35	Z-M40-300	Cap Screw	1
10	P-4	O-Ring	2	36	475-18	Lower Weight	1
11	350-7	Valve Spring	1	37	475-12	Crank Shaft	1
12	670-22	Inlet Bushing	1	38	N1-M40	Nut	12
13	680-11	Exhaust Bushing incl. Collar (650-29)	1	39	AT-40	Washer	12
14	570-52	Motor Housing	1	40	475-20	Shoe Bearing Housing	1
15	IS-8	Retaining Ring	1	41	6300-LLU	Ball Bearing	1
16	P-5	O-Ring	1	42	475-24	Spacer	1
17	485-4	Air Regulator	1	43	475-23	Paper Clip	2
18	JS-10	Retaining Ring	1	44	477-20A	Shoe incl. Nuts (477-50x4)	1
19	6200-ZZ	Ball Bearing	2	45	AT-70	Washer	1
20	640-12A	End Plate	2	46	E-M40-80	Screw	6
21	475-6TS	Rotor	1	47	E-M50-100	Screw	1
22	490-1	Blade Spring	2	48	E-M40-100	Screw	6
23	470-9	Rotor Blade	4	49	P-3007	Leather Pad incl. Plate (477-44)	1
24	640-1	Cylinder	1	50	A-M50-100	Screw	4
25	P-7	O-Ring	1	★51	M-3007	Velcro Pad incl. Plate (477-44)	1
26	30-8	Roll Pin (3-8mm)	1				