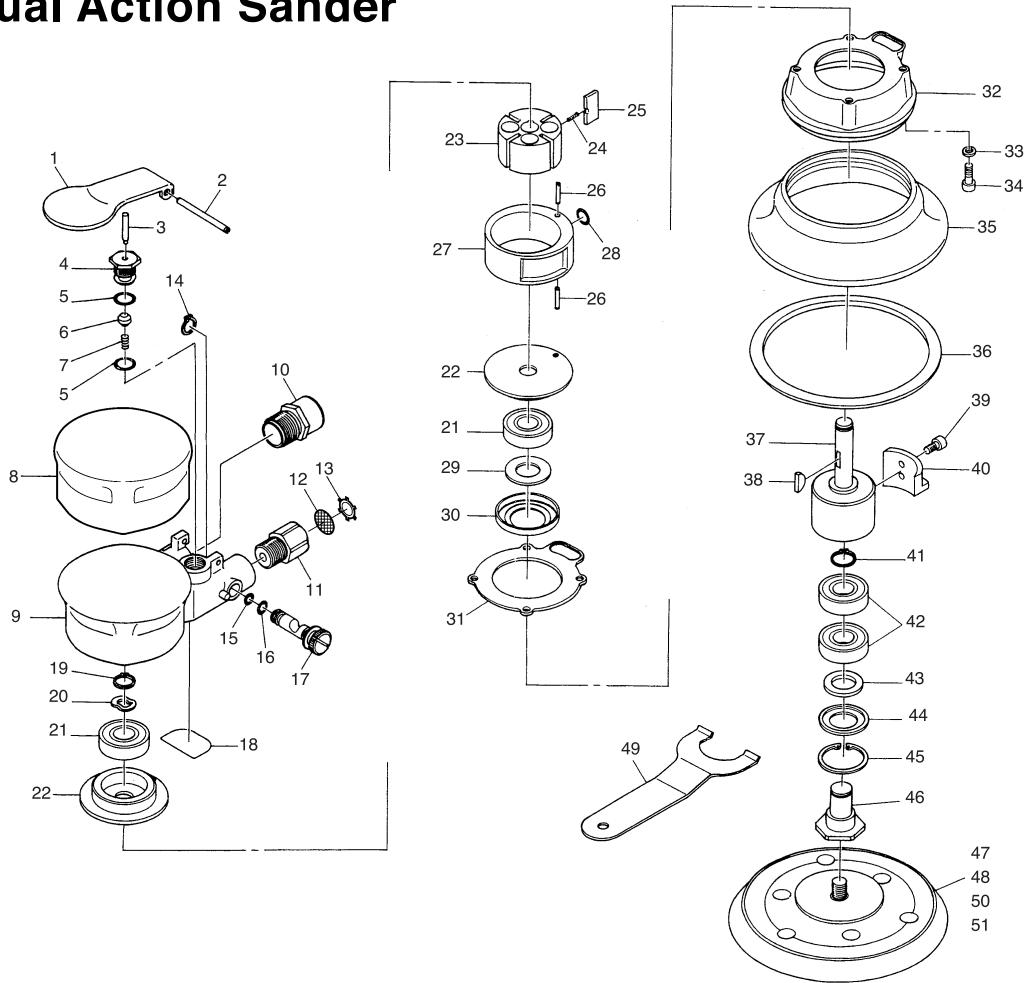


# SI-3101(M) 6" Dual Action Sander

# SI-3101-6(M) 6" Dual Action Sander



Ref. No.	Parts No.	Description	Q'ty	Ref. No.	Parts No.	Description	Q'ty
1	1040-11	Throttle Lever	1	27	1040-2	Cylinder	1
2	30-40	Roll Pin (3 φ -40mm)	1	28	P-7	O-Ring	1
3	455-11	Valve Pin	1	29	570-1	Felt Ring	1
4	490-4	Valve Body	1	30	481-9	Seal Cover	1
5	S-10	O-Ring	2	31	1040-9	Motor Gasket	1
6	455-21	Valve	1	32	1041-10	Balancer Cover	1
7	490-20	Valve Spring	1	33	1040-19	Washer	4
8	1040-10A	Housing Cover	1	34	Z-632-127	Cap Screw	4
9	1040-1	Motor Housing	1	35	1041-14U5	Pad Cover	1
10	1040-18AS	Muffer Assy.	1	36	1041-18U5	Felt Ring	1
11	180-1	Inlet Bushing	1	37	1041-11	Balancer Shaft	1
12	680-28A	Screen	1	38	480-23	Key	1
13	CRTW-12	Retainer	1	39	Z-M40-80	Cap Screw	2
14	JS-8	Retaining Ring	1	40	1041-13	Adjust Weight	1
15	P-4	O-Ring	1	41	JS-12	Retaining Ring	1
16	P-5	O-Ring	1	42	6001-LLB	Ball Bearing	2
17	485-4	Air Regulator	1	43	1041-50	Felt	1
18	1040-50	Cover Plate	1	44	1041-51	Seal Plate	1
19	JS-10	Retaining Ring	1	45	BO-28	Retaining Ring	1
20	WW-100	Wave Washer	1	46	1041-12	Random Shaft	1
21	6000-ZZ	Ball Bearing	2	47	M-125H	5"Velcro Pad	1
22	1040-5A	End Plate	2	★48	M-150H	6"Velcro Pad	1
23	1040-4	Rotor	1	49	1041-56	Spanner Wrench	1
24	490-1	Blade Spring	2	50	P-125H	5"Leather Pad	1
25	1040-17	Rotor Blade	4	★51	P-150H	6"Leather Pad	1
26	25-14	Roll Pin (2.5 φ -14mm)	2				